



“Beat more burglars with the only security mesh that uses Screw-Clamp™ technology.”

Doors

Fire Attenuation

Windows

Patio Enclosures

Cyclone
Debris Screens

Safe-S-Capes®

- Single Sliding
- Double & Triple Sliding
- Hinged
- Inswinging

Commercial
Systems

Balustrade &
Pool Fencing

WERS Rated



Fire attenuation and bushfire resistant properties of Crimsafe

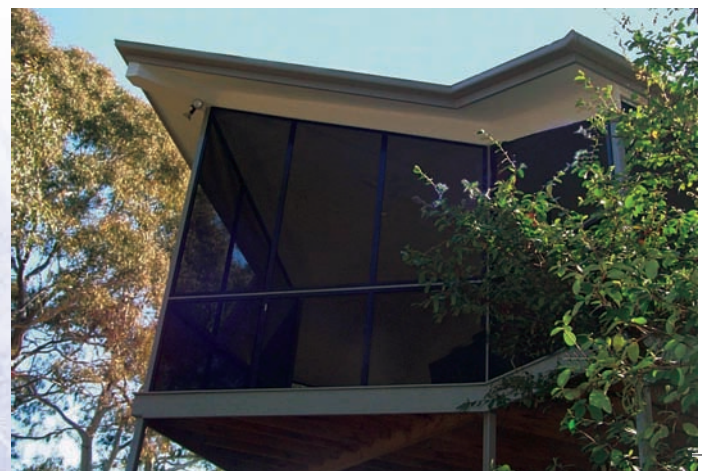
If your home or business is ever caught up in a bushfire, Crimsafe doors and windows will help to protect it from damage.

Floating embers, radiant heat or naked flames all pose an ignition risk to your property. But Crimsafe won't permit floating embers to pass through window spaces, and its fire attenuation feature will reduce the intensity of radiant heat flux and naked flame by up to 45% (confirmed through stringent testing by the CSIRO).

And should debris like a burning tree limb fall against your window or door, the fact that Crimsafe is made from all-metal fastenings means the mesh won't break out of the frame. Competing products that use plastic wedges to hold the mesh in place could melt in a bushfire, destroying the strength of the product.

Installing Crimsafe on your property in a bushfire prone area automatically means you satisfy the requirements of the Building Code of Australia, as our products are fully compliant with AS3959-2009 Construction of Buildings in Bushfire-Prone Areas and meet the requirements of BAL-FZ.

More about Fire Attenuation overleaf...





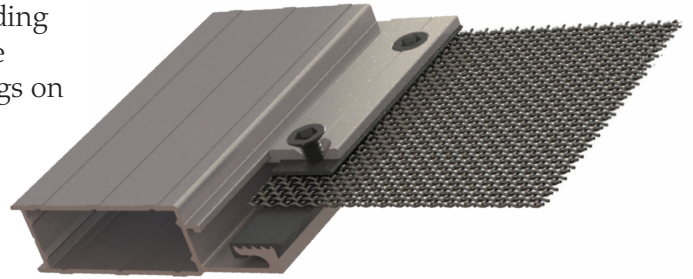
Fire attenuation and bush resistant properties of Crimsafe cont'd

When building in the city, Crimsafe's Fire Attenuating features can save you money and allow more flexibility in building design. Because of its unique properties, Crimsafe mesh allows for building designs with open-able or fixed windows within 3 metres of the boundary of an adjoining property or 6 metres between buildings on the same allotment.

In many cases, the minimisation of heat flux can eliminate the need for water drenching systems covering window openings, saving money before and after the unfortunate event of fire.

If you are a Fire Engineer, Builder or Architect, consider ordering an Architects and Designers kit from us.

The pictures below illustrate the tests conducted to confirm Crimsafe's true fire attenuation properties...



Only Crimsafe drives a screw right through mesh and frame – for unbeatable strength



Contact your local Licensee today:



CRIME PREVENTION PARTNERS

Visit www.crimsafe.com.au